

**DESCUENTO POR
DÍAS DE RENTA:**

10 % descuento | 3 días
20% descuento | 5 días
30 % descuento | 7 días
40 % descuento | 3 semanas
50 % descuento | 1 mes

El Cardumen Creativo cuenta con descuentos superiores al 15% sobre todas las rentas; y dependiendo del proyecto se les puede apoyar con descuentos del 100%. ¿Te da miedo pertenecer al futuro? Pregúntanos sobre cómo formar parte del Cardumen :)



EQUIPO INDIVIDUAL

- | | |
|-----------------------------|-----------------------------|
| 01 Cámaras | 17 Filtros |
| 02 Lentes | 19 Sonido |
| 03 Memorias | 21 Lectores |
| 04 Baterías | 22 Cables |
| 05 Tripies y Cabezales | 23 Accesorios de Cámara |
| 06 Luces y Accesorios | 24 Accesorios de Director |
| 10 Filtros de Luz | 25 Accesorios de Lentes |
| 12 Monitoreo y Accesorios | 26 Grip & Electric |
| 13 Estabilizadores | 28 Audiovisuales |
| 14 Sliders y Dollies | 29 Drones |
| 15 Follow Focus | 30 Cláusulas |
| 16 Matte Box | |

Cámaras



4.



5.



6.



7.



2.



3.



Precio x día
\$

1. ARRI ALEXA Mini LF Ready to Shoot V-Mount Set (LPL)

41,000.00

2. RED Scarlet-W 5K (EF Mount)

5,200.00

3. Blackmagic Design URSA Mini Pro 4.6K G2 Digital Cinema Camera

3,000.00

4. Blackmagic Design Pocket Cinema Camera 6K (Canon EF)

1,600.00

5. Blackmagic Design Pocket Cinema Camera 4K

950.00

6. Canon EOS 5D Mark IV DSLR Camera with Canon Log (Body Only)

1,500.00

7. Canon EOS 5D Mark III Digital Camera

800.00

Lentes



Precio x día

	Precio x día
1. Fujinon Premista 28-100mm T2.9 Large-Format Cine Lens (PL)	\$ 18,000.00
2. ARRI Signature Prime 125mm T1.8 Lens (Feet)	11,700.00
3. ARRI Signature Prime 75mm T1.8 Lens (Feet)	11,100.00
4. ARRI Signature Prime 47mm T1.8 Lens (Feet)	11,100.00
5. ARRI Signature Prime 35mm T1.8 Lens (Feet)	11,100.00
6. ARRI Signature Prime 29mm T1.8 Lens (Feet)	11,100.00
7. ARRI Signature Prime 18mm T1.8 Lens (Feet)	12,300.00
8. Orion Atlas Anamorphic 100mm T2	5,000.00
9. Orion Atlas Anamorphic 80mm T2	5,000.00
10. Orion Atlas Anamorphic 65mm T2	5,000.00
11. Orion Atlas Anamorphic 50mm T2	5,000.00
12. Orion Atlas Anamorphic 40mm T2	5,000.00
13. Orion Atlas Anamorphic 32mm T2	5,000.00
14. Sigma 135mm T2 FF High-Speed Prime (EF, Feet)	5,600.00
15. Sigma 85mm T1.5 FF High-Speed Prime (EF Mount, Feet)	2,700.00
16. Sigma 50mm T1.5 FF High-Speed Prime (EF Mount, Feet)	2,000.00
17. Sigma 35mm T1.5 FF High-Speed Prime (EF Mount, Feet)	2,000.00
18. Sigma 24mm T1.5 FF High-Speed Prime (EF, Feet)	2,000.00
19. Sigma 20mm T1.5 FF High-Speed Prime (EF, Feet)	2,700.00
20. Sigma 14mm T2 FF High-Speed Prime (Canon EF, Feet)	895.00
21. Canon EF 70-200mm f/2.8L IS II USM Telephoto Zoom Lens	360.00
22. Canon EF 100mm f/2.8L Macro IS USM Lens	850.00
23. Canon EF 85mm f/1.2 II USM Lens	600.00
24. Canon EF 50mm f/1.2L USM Lens	450.00
25. Canon EF 35mm f/1.4L USM Wide-Angle Autofocus Lens	700.00
26. Canon EF 24mm f/1.4L II USM Lens	716.00
x2 27. Canon EF 16-35mm f/2.8L II USM Lens	750.00
28. Canon EF 24-70mm f/2.8L II USM Lens	260.00
29. Rokinin 14mm T3.1 Cine DS Lens for Canon EF Mount	417.00
30. Rokinin 24mm T1.5 Cine DS Lens for Canon EF Mount	313.00
31. Rokinin 35mm T1.5 Cine DS Lens for Canon EF Mount	286.00
32. Rokinin 50mm T1.5 AS UMC Cine DS Lens for Canon EF Mount	208.00
33. Rokinin 85mm T1.5 Cine DS Lens for Canon EF Mount	313.00
34. Rokinin 135mm T2.2 Cine DS Lens for Canon EF Mount	

Memorias

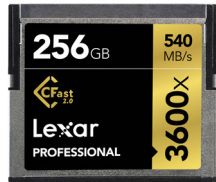
1.



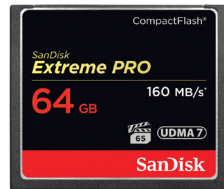
2.



3.



4.



5.



6.



Precio x dia

x2	1. ARRI Codex Compact Drive 1TB	\$	1,600.00
x2	2. RED MINI-MAG 240GB		839.00
x3	3. Lexar 256GB Professional 3600x CFast 2.0 Memory Card		450.00
x4	4. SanDisk 64GB Extreme Pro CompactFlash Memory Card (160MB/s)		50.00
x4	5. SanDisk 64GB Extreme Pro CompactFlash Memory Card (160MB/s)		30.00
x4	6. SanDisk 64GB Extreme PLUS UHS-I microSDXC Memory Card with SD Adapter		30.00

Baterías



		Precio x día
x5	1. Core SWX Helix 150 Mini 147Wh Dual-Voltage Battery (V-Mount)	\$ 450.00
x8	2. IndiPRO Tools Micro-Series V-Mount Li-ion Battery (200Wh)	330.00
x4	3. Core SWX HyperCore Slim RED V-Mount Battery (14.8V)	190.00
x3	4. Core SWX HyperCore Slim V-Mount Battery (14.8V)	190.00
x3	5. Core SWX Nano V-Mount Battery	190.00
	6. Core SWX Fleet Micro 3A Digital Quad Charger for V-Mount Batteries	750.00
	7. Core SWX X2S 2-Bay Vertical V-Mount Battery Charger	220.00
	8. Core SWX GP-2LSJ 2-Bay V-Mount Simultaneous Charger	190.00
	9. IndiPRO Tools Quad Pro Battery Charger (V-Mount)	300.00
x4	10. IndiPRO Tools V-Mount Dual Battery Charger with XLR Output	200.00
x4	11. FREEFLY Battery for MoVi Pro Stabilizer System	150.00
x2	12. FREEFLY Charger for MoVi Pro Batteries	70.00
x8	13. Canon LP-E6N Lithium-Ion Battery Pack (7.2V, 1865mAh)	46.00
x2	14. Canon LP-E6 Rechargeable Lithium-Ion Battery	39.00
x3	15. Watson LP-E6N Lithium-Ion Battery Pack (7.4V, 2000mAh)	27.00
x3	16. Watson Duo LCD Charger with Two LP-E6 Battery Plates	45.00
	17. Canon DR-E6 DC Coupler	33.00
x3	18. Godox WB26 Rechargeable Lithium-Ion Battery AD600Pro Flash (28.8V, 2600mAh)	124.00
x6	19. Watson 4-Hour Rapid Charger with 4 AA NiMH Rechargeable Batteries (2300mAh)	12.00
x8	20. Watson MX AA NiMH Battery (1.2V, 2550mAh)	5.00
	21. Watson 8-Bay Rapid Charger for AA / AAA NiMH or NiCd Rechargeable Batteries	30.00
x8	22. Pilas recargables "C" NiMH 3000 MAH	5.00
	23. Cargador de pilas "AA, AAA, C, D y 9V"	10.00

Tripies y Cabezales



	<i>Precio x día</i>
1. OConnor 1040 Fluid Head and flowtech 100 Tripod System with Handle and Case	\$ 6,000.00
2. Manfrotto Nitrotech N12 & 536 Carbon Fiber Single Legs Tripod System	840.00
3. Manfrotto Nitrotech N8 Video Head & 535 Carbon Fiber Tripod	670.00
4. Manfrotto 504HD Video Fluid Head & 3-Section Carbon Fiber Tripod	650.00
5. Manfrotto 502HD Pro Video Head with Flat Base (3/8"-16 Connection)	520.00
6. Manfrotto MT055XPRO3-3W Aluminum Tripod with 3-Way Pan/Tilt Head	150.00
7. Kessler Crane K-Pod Tripod System	340.00
8. Benro 100mm Hi-Hat Benro 75mm Half Ball Adapter	160.00
9. Manfrotto 520BALLSH 75mm Short Half-Ball	40.00
10. Benro 75mm Half Ball Adapter	40.00
11. Manfrotto 500BALLSH 100mm Half-Ball with Short Locking Handle	40.00

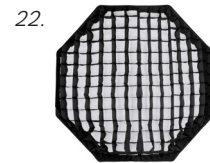
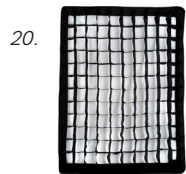
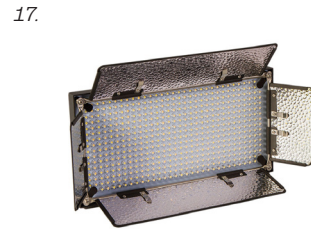
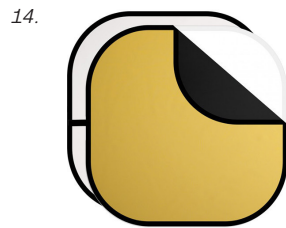
Luces y Accesorios



Precio x día

	1. MOLE-RICHARDSON 1600w VARI-TENER LED HEAD/REG	\$ 11,000.00
x2	2. MOLE-RICHARDSON 900w VARI-SENIOR LED HEAD/REG	6,000.00
	3. Litepanels Astra 6X Traveler Bi-Color Trio 3-Light Kit with V-Mount Battery Plates	2,300.00
x3	4. Aputure Light Storm C300d Mark II LED Light Kit with V-Mount Battery Plate	850.00
x3	5. Aputure Light Storm C300d LED Light	690.00
x3	6. Litepanels DoPchoice Snapbag Softbox for Astra 1x1	150.00
x6	7. Luxli Timpani 1x1 RGBAW LED Light	720.00
x2	8. Aputure Light Dome II (34.8")	160.00
x2	9. Aputure Light Dome Mini II (21.5")	100.00

Luces y Accesorios



		Precio x día
x3	10. Aputure Lantern Softbox	\$ 100.00
	11. Aputure Light Dome for Light Storm LS Cob120 (35")	120.00
	12. Aputure Light Dome Mini (27")	80.00
x3	13. Aputure Fresnel 2X Attachment	90.00
	14.	67.00
	15. Impact 5-in-1 Collapsible Circular Reflector Disc (42")	50.00
	16. ikan iLED312-v2 On-Camera Bi-Color LED Light with Digital Display	240.00
	17. ikan IB508-v2 Bi-Color LED 3-Light Studio Kit	970.00
x3	18. Godox AD600Pro Wistron All-In-One Outdoor Flash	600.00
x2	19. Impact Luxbanx Duo Medium Rectangular Softbox (24 x 32")	80.00
x2	20. Impact Fabric Grid for Medium Rectangular Luxbanx (24 x 32")	50.00
	21. Impact Luxbanx Duo Medium Octagonal Softbox (60")	130.00
	22. Impact Fabric Grid for Medium Octagonal Luxbanx (60")	70.00
x3	23. Impact Speed Ring for Impact, Bowens S, Westcott & Aputure	50.00
x3	24. Aputure Fresnel Lens Mount for Light Storm LS120 COB	50.00

Luces y Accesorios

25.



26.



27.



28.



29.



30.



31.



32.



33.



Precio x día

25. Godox XProC TTL Wireless Flash Trigger for Canon Cameras \$ 50.00

26. Godox XProN TTL Wireless Flash Trigger for Nikon Cameras 50.00

27. Godox XProS TTL Wireless Flash Trigger for Sony Cameras 50.00

28. Impact Snoot for Select Impact/Bowens S-Mount Strobes 20.00

x2 29. Digital Juice Pro Flag Kit (24 x 36") 180.00

30. CAME-TV 4-Piece Fresnel Tungsten Light Set (1 x 650W, 2 x 300W, & 1 x 150W) 460.00

x2 31. Mole-Richardson 4-Way/4-Leaf Barndoor for 400W Studio JuniorLED Fresnel 150.00

32. Mole-Richardson 4-Way Barndoor Set for 1600 W Tener LED Fresnel 230.00

33. Canon Speedlite 600EX-RT 300.00

34. Lumu Power Color & Light Meter Attachment for iOS Devices 200.00

35. Sekonic L-358 Flash Meter 140.00



NUESTRAS LUCES



Aputure- Nuestras 300D

(Mark I y Mark II) son unas luces portátiles (Se pueden usar con baterías) y fáciles de montar en cualquier lugar. Con temperatura base de 5500K y un CRI de 96. Solo consumen 300w de energía y aun así tienen una potencia comparable con un HMI de 400w. Sus monturas bowens facilitan usar una infinidad de accesorios para modificar la luz a tu preferencia. La versión Mark II viene con animaciones de iluminación incluida, para cuando quieras lograr el efecto de parpadeo de una televisión hasta una ráfaga de fotografías de los paparazzi. Excelentes para controlar remotamente. Contamos con 3 Mark I, y 3 Mark II.



Mole Richardson- Las luces

LEDs más potentes hasta este año del 2019. Comparables con los ARRI HMI M8 y M18. Uso clásico de fresnel con spot de 20° y flood de 55°. Excelente CRI de 95+, con temperatura variable de 2700-6500K y con control de +/- green. Contamos con 2 de 900w, y una de 1600w.



Luxli - Nuestros paneles 1x1

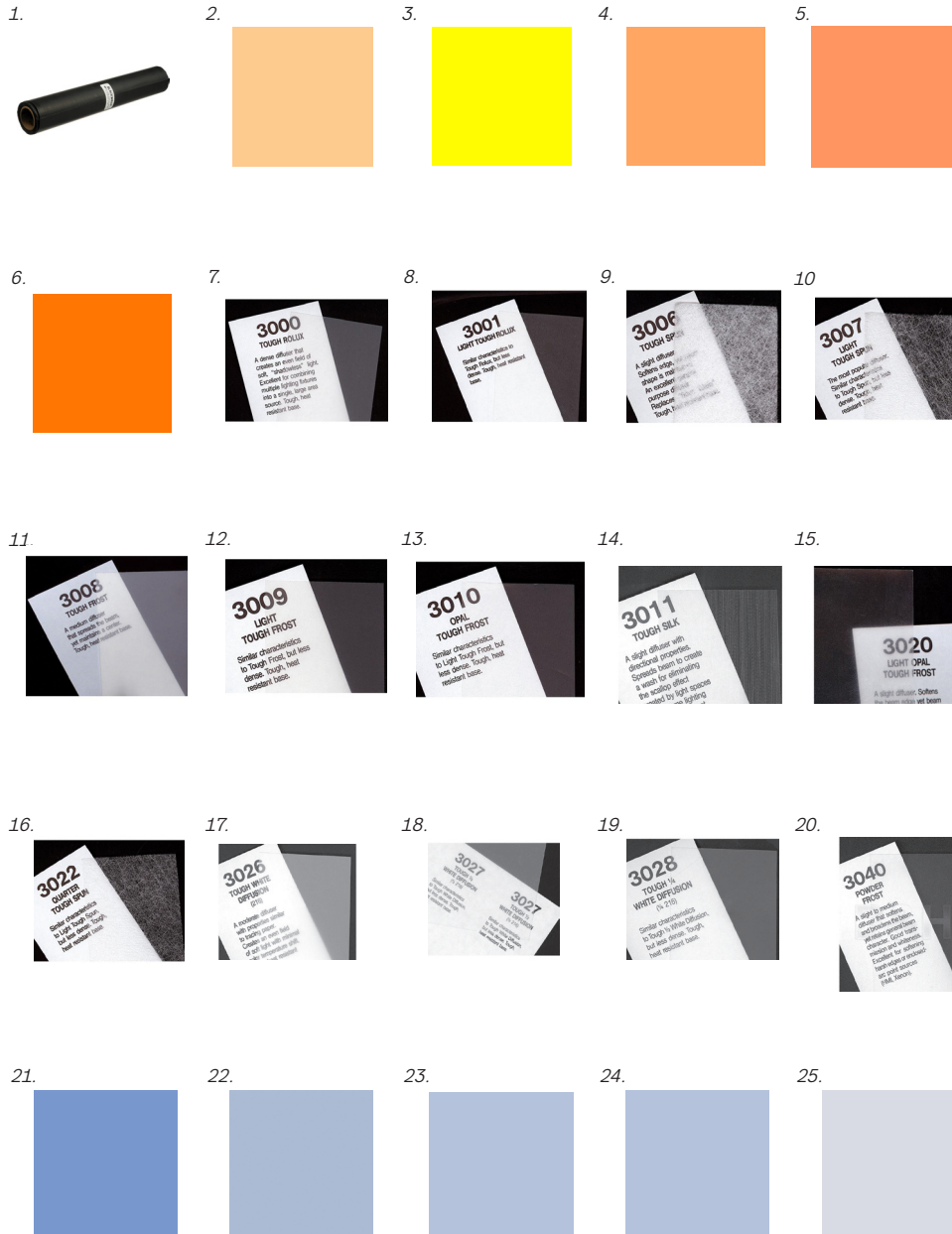
Luxli timpani son un éxito en todas las producciones. A pesar de solo consumir 120w (se pueden utilizar con baterías), tienen un buen output de luz, reproducen todos los colores (RGBWA), tiene un listado que emula todos los filtros de luz más utilizados, incluyen variedad de animaciones, ligeras y fáciles de utilizar. Todo esto con un CRI de 95. Contamos con 6 Luxlis.

Litepanels - Nuestro kit de 3 paneles Astra 6X tienen el sello de calidad Litepanels. Con un enfoque en portabilidad y potencia, estos paneles de luz de 1x1 consumen tan solo 105w, pero tienen una potencia inigualable para unos paneles tan ligeros y de tan bajo consumo de energía. Mantiene un CRI de 95 y una temperatura variable de 3200-5600K. Incluyen un set de difusores especiales para estas luces.

¿Por que deberías de rentar nuestras luces LED y no las demás opciones?

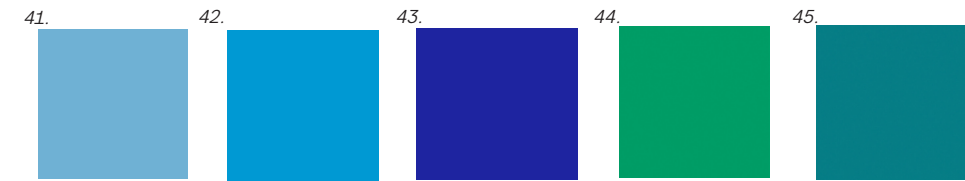
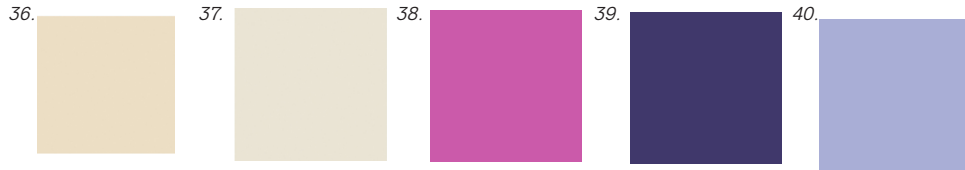
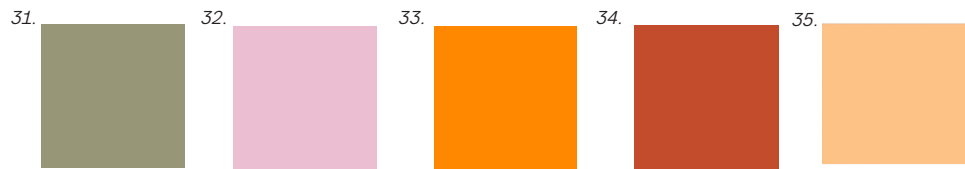
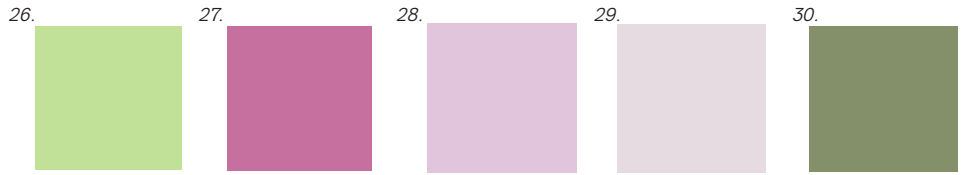
Antes era necesario rentar fresneles de tungsteno por su bajo costo y alta fidelidad de color (CRI alto), o rentar HMIs por su gran potencia, o fluorescentes para, con bajo costo, lograr una luz suave. Ya no es necesario. LED es el futuro y nuestras LEDs son las mejores. Olvídate de lámparas con bajo CRI, lámparas calientes, lámparas que no puedes conectar donde quieras, lámparas complicadas de usar, lámparas peligrosas de usar, lámparas que no puedes utilizar con altos fps (frame per second). Nuestros LEDs hacen todo y son accesibles. ¿No te convences todavía? Esta gráfica enseña que tanta potencia obtienes de cada tipo de iluminación por watts utilizados. No se te olvide probar el paquete estrella de la casa 'P16 | Full LED Light Kit'.

Filtros de Luz y fondos



		Precio x día
x3	1. Gam Blackwrap - 12"x50' Roll	\$ 21.00
x5	2. Rosco #02 Filter - Bastard Amber - 20x24"	10.00
x5	3. Rosco #12 Filter - Straw - 20x24"	10.00
x5	4. Rosco #16 Filter - Light Amber - 20x24"	10.00
x5	5. Rosco #17 Filter - Light Flame - 20x24"	10.00
x5	6. Rosco #21 Filter - Golden Amber - 20x24"	10.00
x5	7. Rosco #3000 Filter - Tough Rolux - 20x24"	10.00
x5	8. Rosco #3001 Filter - Light Tough Rolux - 20x24"	10.00
x5	9. Rosco #3006 Filter - Tough Spun - 20x24"	10.00
x5	10. Rosco #3007 Filter - Light Tough Spun - 20x24"	10.00
x5	11. Rosco #3008 Tough Medium Cinegel Filter (20x24" Sheet)	10.00
x5	12. Rosco #3009 Filter - Light Tough Frost - 20x24"	10.00
x5	13. Rosco #3010 Filter - Opal Tough Frost - 20x24"	10.00
x5	14. Rosco #3011 Filter - Tough Silk - 20x24"	10.00
x5	15. Rosco #3020 Filter - Light Opal Tough Frost - 20x24"	10.00
x5	16. Rosco #3022 Filter - 1/4 Tough Spun - 20x24"	10.00
x5	17. Rosco #3026 Filter - Tough White Diffusion - 20x24"	10.00
x5	18. Rosco #3027 Filter - 1/2 Tough White Diffusion - 20x24"	10.00
x5	19. Rosco #3028 Filter - 1/4 Tough White Diffusion - 20x24"	10.00
x5	20. Rosco #3040 Filter - Powder Frost - 20x24"	10.00
x5	21. Rosco 3202 Full Blue	10.00
x5	22. Rosco 3204 1/2 Blue	10.00
x5	23. Rosco 3206 1/3 Blue	10.00
x5	24. Rosco 3208 1/4 Blue	10.00
x5	25. Rosco 3216 1/8 Blue	10.00

Filtros de Luz y fondos



		Precio x día
x5	26. Rosco 3304 Tough Plusgreen	\$ 10.00
x5	27. Rosco 3308 Tough Minusgreen	10.00
x5	28. Rosco 3313 Tough 1/2 Minusgreen	10.00
x5	29. Rosco 3314 Tough 1/4 Minusgreen	10.00
x5	30. Rosco 3315 Tough 1/2 Plusgreen	10.00
x5	31. Rosco 3316 Tough 1/4 Plusgreen	10.00
x5	32. Rosco #33 Filter - No Color Pink - 20x24"	10.00
x5	33. Rosco 3401 Roscosun 85	10.00
x5	34. Rosco 3407 Roscosun CTO	10.00
x5	35. Rosco 3408 Roscosun 1/2 CTO	10.00
x5	36. Rosco 3409 Roscosun 1/4 CTO	10.00
x5	37. Rosco 3410 Roscosun 1/8 CTO	10.00
x5	38. Rosco #44 Filter - Middle Rose - 20x24"	10.00
x5	39. Rosco #47 Filter - Light Rose Purple - 20x24"	10.00
x5	40. Rosco #51 Filter - Surprise Pink - 20x24"	10.00
x5	41. Rosco #60 Filter - No Color Blue - 20x24"	10.00
x5	42. Rosco #65 Filter - Daylight Blue - 20x24"	10.00
x5	43. Rosco #80 Filter - Primary Blue - 20x24"	10.00
x5	44. Rosco #89 Filter - Moss Green - 20x24"	10.00
x5	45. Rosco #93 Filter - Blue Green - 20x24"	10.00
x5	46. Rosco Cinegel #3015 (Light Tough Silk, 20 x 24" Sheet)	10.00
x5	47. Rosco Roscolux #26 Light Red Sheet (20x24")	10.00
x5	48. Rosco #3026 Filter - Tough White Diffusion - 20x24"	10.00
	49. Impact Super Collapsible Background - 8 x 16' (Chroma Green)	70.00

Monitoreo y Accesorios



Precio x día

1. SmallHD 2403 HDR 24" Production Monitor	\$ 2,500.00
2. SmallHD 7" Cine 7 On-Camera 500 RX Monitor with Handles (V-Mount)	1,500.00
3. SmallHD 7" Cine 7 Touchscreen On-Camera Monitor (V-Mount)	1,000.00
4. SmallHD 702 Bright 7" Full HD On-Camera Monitor	700.00
5. TERADEK BOLT XT 500 SDI/HDMI WL TX/RX SET VMNT/REG	1,800.00
6. CINEGEARS Ghost-Eye 150M V2 Wireless HD & SDI Video Transmission Kit (984')	800.00
7. Blackmagic Design URSA Viewfinder	900.00
8. SmallHD Cine 7 Monitor Camera Control Kit for RED DSMC2 Cameras	350.00
9. Blackmagic Design URSA Viewfinder	350.00

Estabilizadores

1.



2.



3.



4.



5.



6.



Precio x día

1. EASYRIG VARIO 5 w/STABIL AND GIMBAL RIG VEST/REG	\$	4,300.00
2. FREEFLY MOVI Pro Handheld Bundle with Handheld Case		4,200.00
3. Steadicam Scout Camera Stabilizer (AB Mount, Vest), 2 Batteries and Charger Kit		2,000.00
4. DJI Ronin-S		800.00
5. Manfrotto Sympla Shoulder Support System		250.00
6. Ready Rig GS Stabilizer Kit with Case		1,600.00

Sliders y Dollies

1.



2.



3.



4.



5.



6.



7.



8.



9.



Precio x día

	1. Matthews Round-D-Round Doorway Dolly	\$ 1,640.00
	2. Dana Dolly Portable Dolly System Rental Kit with Universal Track Ends	730.00
	3. E-Image ES-120 48" Carbon Fiber Slider	260.00
	4. Benro MoveUp15 Compact Jib	500.00
	5. Dana Dolly Portable Aluminum Pipe Kit (6-Pack, 39")	330.00
	6. Matthews 395012 Hot Buttons Dolly Wheels(Set of 4)	500.00
x4	7. Riel recto de 1.00 metro	50.00
x4	8. Riel Curvo de 1.00 metro	70.00
x8	9. Riel Curvo de 2.40 metros	90.00

Follow Focus



	<i>Precio x día</i>
1. Teradek CTRL.3 Motor Wireless Lens Control Deluxe 3-Motor Kit	\$ 8,000.00
2. Teradek RT Single-Axis Super-Speed Wireless Lens Control Kit (Imperial)	2,500.00
3. CINEGEARS Single-Axis Wireless Follow Focus Express Plus Basic Extreme Kit	1,200.00
x2 4. Tilta TT-03-GJ Rig Follow Focus Kit	325.00
5. Redrock Micro microFollowFocus	250.00
6. Teradek Monitor Bracket for CTRL.1/CTRL.3 Hand Controllers	120.00

Matte Box

1.



2.



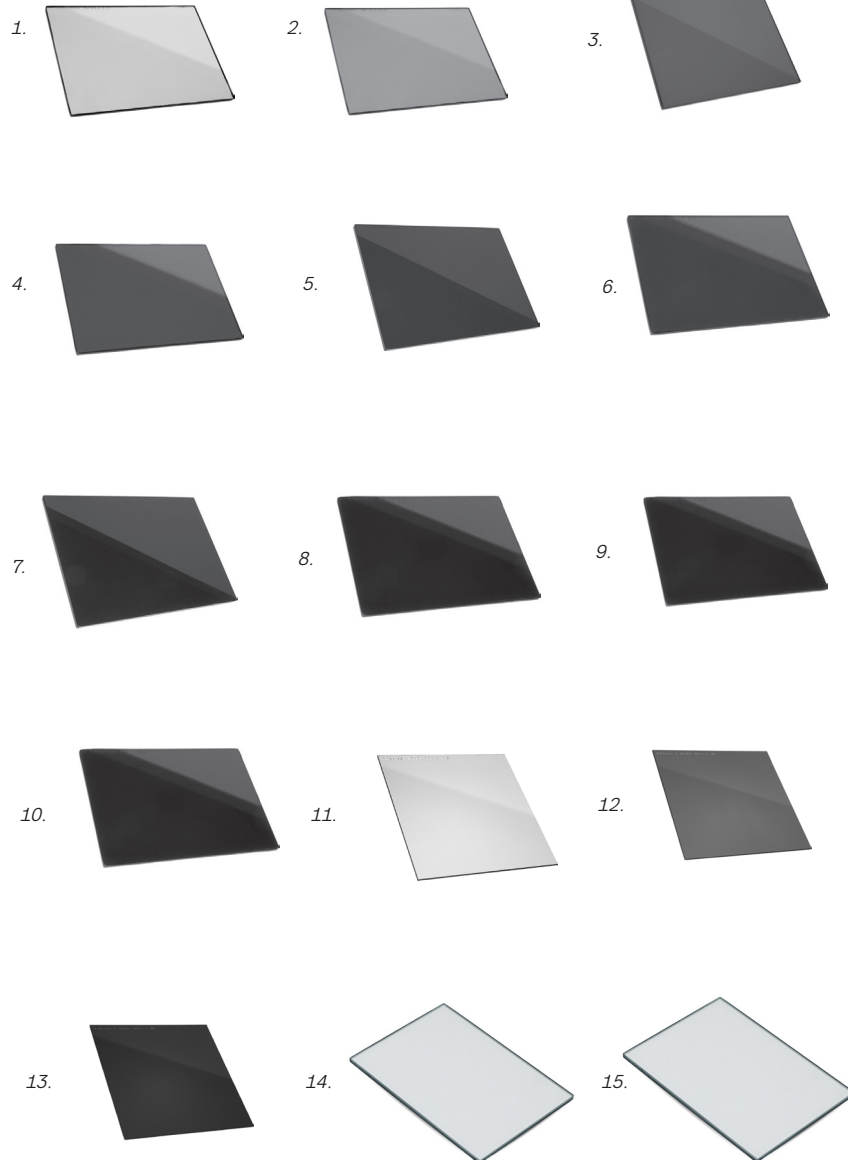
3.



Precio x día

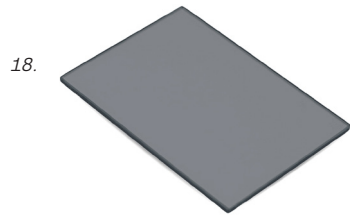
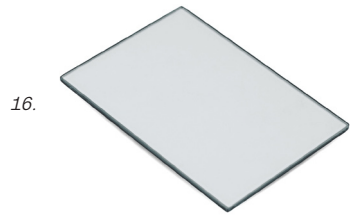
1. Tilta 4x4 Carbon Fiber Matte Box	\$	850.00
2. Manfrotto Sympla Flexible Mattebox		520.00
3. Wooden Camera UMB-1 Universal Matte Box (Clamp On)		250.00

Filtros



	Precio x día
1. Formatt Hitech 4 x 5.65" Firecrest ND 0.3 Filter (1-Stop)	\$ 350.00
2. Formatt Hitech 4 x 5.65" Firecrest ND 0.6 Filter (2-Stop)	310.00
3. Formatt Hitech 4 x 5.65" Firecrest ND 0.9 Filter (3-Stop)	330.00
4. Formatt Hitech 4 x 5.65" Firecrest ND 1.2 Filter (4-Stop)	290.00
5. Formatt Hitech 4 x 5.65" Firecrest ND 1.5 Filter (5-Stop)	270.00
6. Formatt Hitech 4 x 5.65" Firecrest ND 1.8 Filter (6-Stop)	360.00
7. Formatt Hitech 4 x 5.65" Firecrest ND 2.1 Filter (7-Stop)	350.00
8. Formatt Hitech 4 x 5.65" Firecrest ND 2.4 Filter (8-Stop)	340.00
9. Formatt Hitech 4 x 5.65" Firecrest ND 2.7 Filter (9-Stop)	320.00
10. Formatt Hitech 4 x 5.65" Firecrest ND 3.0 Filter (10-Stop)	325.00
11. Formatt Hitech 100 x 100mm Firecrest ND 0.3 Filter	100.00
12. Formatt Hitech 100 x 100mm Firecrest ND 0.6 Filter	120.00
13. Formatt Hitech 100 x 100mm Firecrest ND 0.9 Filter	120.00
14. Tiffen 4 x 5.65" Black Pro-Mist 1 Filter	350.00
15. Tiffen 4 x 5.65" Black Pro-Mist 1/2 Filter	315.00

Filtros



Precio x día

16. Tiffen 4 x 5.65" Black Pro-Mist 1/4 Filter	\$	350.00
17. Tiffen 4 x 5.65" Circular Polarizer Filter for Tiffen Multi Rota Tray		310.00
18. Tiffen 4 x 5.65" Linear Polarizer Filter		270.00
19. Century 4x4 Skintone Enhancer Filter		110.00
20. Century 4x4 Black Frost 1/2 Filter		110.00
21. Century 4x4 ND .6 Solid Filter		85.00
22. Century 4x4 ND .6 Soft Edge Graduated Filter		85.00
23. Century 4x4 Circular Polarizer Filter		90.00
24. Tiffen 77mm Variable ND Filter		110.00
25. Hoya Filter Diffuser 77mm		40.00

Sonido

1.



2.



3.



4.



5.



6.



Precio x día

7.



8.



1.	Sennheiser AVX Camera-Mountable Wireless Set with MKE2 Lav & Waterproof	\$	1.200.00
x2	Azden WLX-PRO VHF Wireless Lavalier Microphone System (F1/F2 Frequencies)		94.00
	Rode NTG-3 Precision RF- Biased Shotgun Microphone		480.00
	Rode VideoMic Pro Compact Shotgun Microphone		127.00
	Zoom F4 Multitrack Field Recorder Kit with Protective Case		460.00
	K-Tek KE-89CC Avalon Series Aluminum Boompole with Internal XLR Cable		120.00
	K-Tek KE-79CC Traveler Avalon Series Aluminum Boompole		157.00
	Rode Blimp Windshield and Rycote Shock Mount Suspension System for Shotgun Microphones		141.00

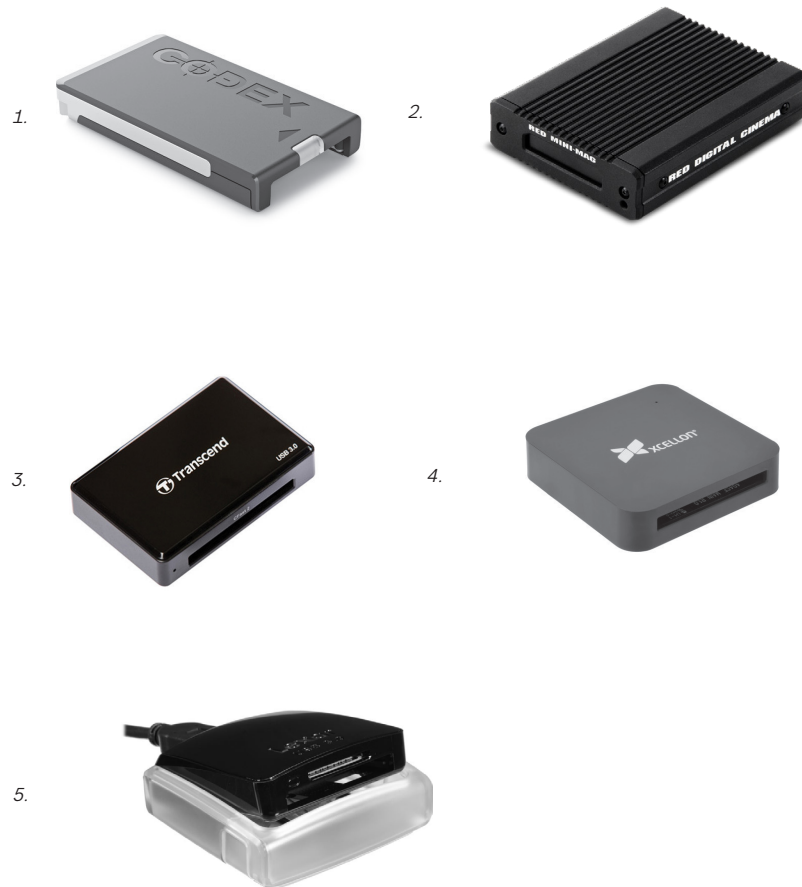
Sonido



Precio x día

	9. Rode WS7 Deluxe Windshield	\$	31.00
	10. Rode Deadcat VMP Wind Muff		25.00
x3	11. Senal SMH-1000 Professional Field and Studio Monitor Headphones		35.00
	12. Neutrik XLR Elite Microphone Cable 25'		14.00
x2	13. Kopul Coiled 3-Pin XLR-M to Angled 3-Pin XLR-F Cable - 8 to 24" (20 to 61 cm), Black		19.00
	14. Elvid 9-Section Acrylic Production Slate with Color Clapper Sticks		19.00
x2	15. Auray DUSM-1 Universal Shock Mount for Camera Shoes and Boompoles		25.00
x2	16. Kopul XLR Male to Mini Female Adapter		5.00

Lectores y discos duros



		Precio x día
1.	ARRI CODEX COMPACT DRIVE READER (USB-C)/REG	\$ 580.00
2.	RED STATION RED MINI-MAG	160.00
3.	Transcend CFast 2.0 Card Reader	40.00
4.	Xcellon CFast 2.0 USB 3.1 Gen 2 Type-C Card Reader	40.00
5.	Lexar Professional USB 3.0 Dual-Slot Reader (UDMA 7)	30.00

Cables

1.



2.



3.



4.



5.



6.



7.



8.



9.



10.



11.



12.



13.



14.



15.



16.



Precio x día

x2	1. SHAPE BNC 1st AC Camera Cable Kit	\$	160.00
x2	2. SHAPE Mixed 1st AC Camera Cable Kit		160.00
	3. Wooden Camera D-Tap to Epic/Scarlet/Dragon/Weapon Braided Flexible Cable (36")		130.00
	4. Wooden Camera D-Tap Power Cable for RED Epic/Scarlet (15")		110.00
	5. Wooden Camera 2-Pin LEMO to 2-Pin LEMO ARRI Power Cable (18")		90.00
x2	6. Anton Bauer PowerTap Multi - Male PowerTap to Four Female PowerTap Receptacles		50.00
x2	7. CineCoil 20" Coil-Based SDI Cable with BNC to BNC Connectors		40.00
	8. Core SWX 28" D-Tap to 4-Pin XLR Cable		30.00
	9. Pearstone 50' SDI Video Cable - BNC to BNC		50.00
x4	10. Canare 1' L-3CFW RG59 HD-SDI Coaxial Cable with Male BNCs (Red)		30.00
x3	11. Canare 2' L-3CFW RG59 HD-SDI Coaxial Cable with Male BNCs (Blue)		30.00
x3	12. Canare 3' L-3CFW RG59 HD-SDI Coaxial Cable with Male BNCs (Green)		30.00
	13. Cable HDMI Steren (20 m)		40.00
x2	14. Cable Elite HDMI 4K Steren (10 M)		20.00
x2	15. Cable Micro HDMI a HDMI Ultra Delgado Steren (1.8M)		10.00
x2	16. Cople HDMI Hembra a Hembra Steren		5.00

Accesorios de Cámara

1.



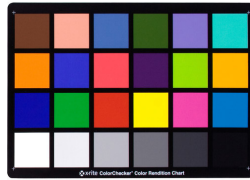
2.



3.



4.



5.



6.



Precio x día

1.	Canon BG-E20 Battery Grip for EOS 5D Mark IV	\$	213.00
x2	2. Blackmagic Design Pocket Cinema Camera 6K/4K Battery Grip		169.00
	3. Apple 32GB iPod touch (Space Gray) (6th Generation)		144.00
	4. X-Rite ColorChecker Classic Card		60.00
	5. Vortex Media WC3 WarmCards 3.0 White Balance Reference System		45.00
	6. Canon RC-6 Wireless Remote Control		14.00

Accesorios de Director

1.



2.



1. Birns & Sawyer Director's Universal Mini Viewfinder

\$ 120.00

2. Megafono Steren MG-260

49.00

Precio x día

Accesorios de Lentes

1.



2.



3.



4.



5.



Precio x día

1. ATLAS 1.6X LF EXTENDER PL TO PL	\$	1.380.00
2. Metabones T Speed Booster Ultra 0.71x Adapter for Canon Full-Frame		400.00
3. Redrock Micro microLensGears Kit - 4 Gears (Black)		100.00
4. Sigma USB Dock for Canon EF-Mount Lenses		40.00
5. Tiffen 62-77mm Step Up Ring		20.00

Grips & Electric



		Precio x día
	1. Matthews Scrim and Flag Kit - 18x24" and 24x36"	\$ 1.200.00
x2	2. Sunbounce Silver with White Back Butterfly/Overhead Reflector Screen (8 x 8')	200.00
x4	3. V-FLAT WORLD Foldable V-Flat (Black/White)	140.00
x6	4. Kupo Master Combo HD Stand (11')	115.00
x2	5. Marco para Babenett 8 x 8 Pies	80.00
x6	6. Matthews 20" C+ Stand with Turtle Base, Grip Head and Arm Kit (Black)	125.00
	7. CHAUVET DJ Hurricane 1000 Fog Machine with Manual and Wireless Remote Control	100.00
	8. Pizarra de Sol Dorada y Plata	100.00
x8	9. Manfrotto Alu Master Air-Cushioned Stand (Black, 12')	80.00
	10. Manfrotto Hydrostatic Arm - 7" (17.8cm)	80.00
x15	11. Impact Turtle Base C-Stand Kit - 10.75' (Black)	75.00
x4	12. Matthews Set of Four Apple Boxes	70.00
	13. Kit de Discos de Pesas	65.00
x3	14. Impact Boom Arm (Black, Chrome-plated, 86")	55.00
	15. Steren 15m Heavy Duty Power Cord	15.00

Grips & Electric

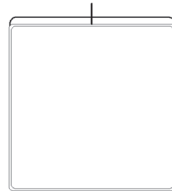
16.



17.



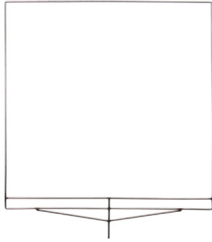
18.



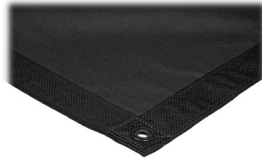
19.



20.



21.



22.



23.



24.



25.



26.



27.



28.



29.



30.



31.



Precio x día

	16. Steren 8m Heavy Duty Power Cord with Power Block	\$	10.00
x3	17. Floppy Negro 4x4		30.00
x3	18. Seda 4x4		19.00
x2	19. Seda 8x8		35.00
x2	20. Marco 4x4		10.00
x2	21. Fabrica Negra 8x8		40.00
	22. Matthews Octagon Board		40.00
x2	23. Photoflex LiteReach Plus		115.00
x8	24. Matthews Mattheilini Clamp - 2" End Jaw, Silver		30.00
x3	25. Impact Plate Clamp Duckbill Style		30.00
x6	26. Impact 4.5" Junior Grip Head		35.00
x6	27. Impact Grip Head with Fixed Super Clamp		30.00
x6	28. Impact 3" Baby Pin Wall Plate		10.00
x3	29. Manfrotto Lite-Tite Swivel Umbrella Adapter		25.00
x18	30. Impact Saddle Sandbag (15 lb, Orange Cordura)		15.00
x20	31. Bessey Steel Spring Clamp (Black, 2 1/4 x 2")		5.00

Audiovisuales

1.



2.



3.



Precio x día

1. BenQ HT2050A Full HD DLP Home Theater Projector	\$	745.00
2. Da-Lite 36474 Picture King Portable Tripod Front Projection Screen (52 x 92")		390.00
3. Luxor Steel Adjustable Height AV Cart with Three Shelves (Black)		120.00

Drones

1.



2.



Precio x día

1. DJI Mavic 2 Pro

\$ 1.200.00

2. DJI Mavic 2 Fly More Kit

300.00

Cláusulas

Todo el equipo está sujeto a disponibilidad. En dado caso de que se confirme que el equipo esté disponible mediante la cotización, te recordamos que sólo se apartarán fechas si se hace un anticipo mínimo del 25%, o si prefieres, puedes liquidarlo de una vez.

Mochilas y fundas

La mayoría del equipo viene con fundas y protectores. En dado caso que te entreguemos equipo sin protección, favor de resguardarlo y asignarle un lugar donde no se lastime.

Domicilio

Por el momento no contamos con servicio a domicilio. Toda entrega y devolución del equipo se efectuarán en el domicilio PZNO.

Método de pago

- Efectivo
- Tarjeta de débito y crédito (no AMEX)
- Transferencia y depósito de fondos.

Metodología de entrega

1. Traer identificación oficial.
2. Se firmará contrato de arrendamiento al recoger el equipo en las oficinas.
3. Al momento de devolver el equipo se revisará el estado del material para ver que todo está en orden.
4. Al final se firmará el apartado del contrato de devolución completada.

Al firmar el contrato de arrendamiento estas de acuerdo en volverte responsable del equipo y reparar o pagar la totalidad de daños o extravíos efectuados al equipo. Te recomendamos asegurar tu producción en el caso que sea a gran escala.

